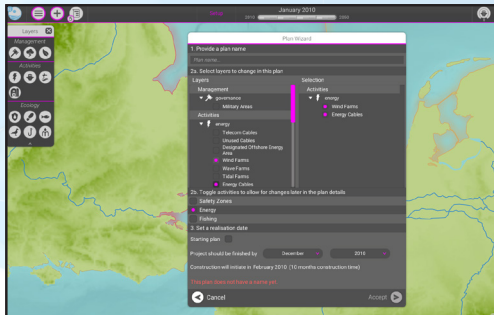




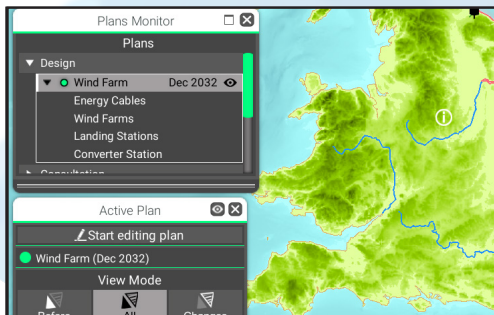
STEP 1: CREATE A NEW PLAN

To start designing a new wind farm, one has to create a new plan. This can be done by clicking **+** in the top-left corner.



STEP 2: PROVIDE DETAILS

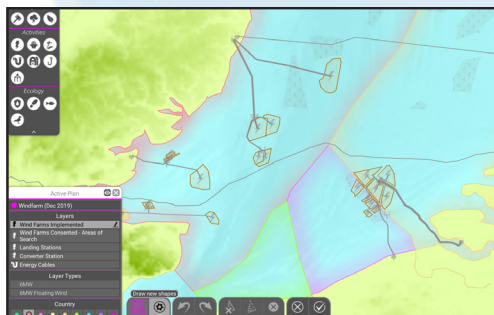
In the plan wizard, details need to be added.
A: Give the plan a name (e.g. Wind Farm).
B: Select the layers you wish to include in your plan.
 (e.g. Wind Farms, Landing Stations, Converter Stations, Energy Cables)
C: Set a realisation date and click accept.



STEP 3: THE PLANS MONITOR

The Plans Monitor **☰** will open, showing the plan that was just created. Click on the **👁** next to the plan name to view it and click on **✎** Start editing plan to enable editing.

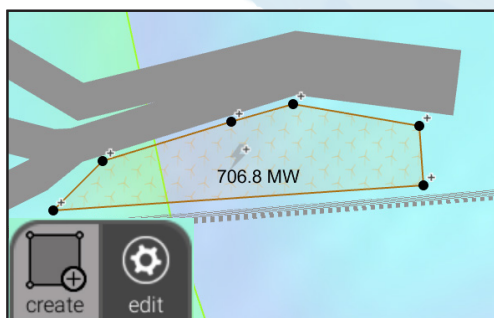
*Tip: Click on the **☐** next to **✕** to enlarge/shrink the window*



STEP 4: EDITING THE PLAN(S)

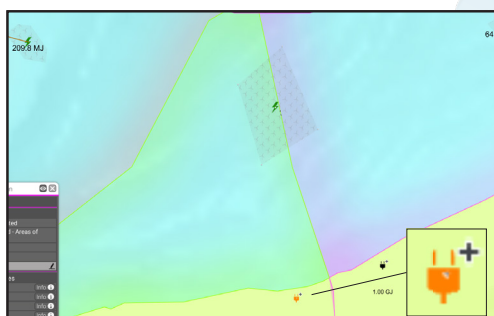
In the bottom-left corner, a new menu will appear. In this menu you can select which layer you wish to edit. Here it is also possible to create new geometry (see Step 5).

Note: Editing is usually done at a later stage.



STEP 5: CREATING A WIND FARM

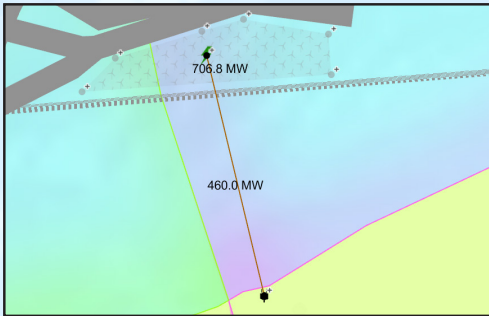
A: Select the Wind Farm layer and the desired type below it.
B: Click **+** in the bottom-left corner to create a new area.
C: Click anywhere to start forming a shape.
D: To finish the shape, double-click your last point or click on your first point again when your cursor looks like this **↖**.



STEP 6: ADD A LANDING STATION

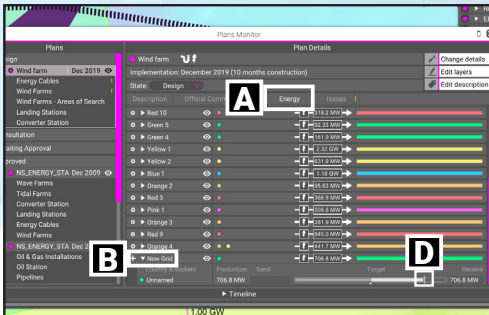
A: Select the Landing Station layer.
B: Select the type of Landing Station.
C: Click Create in the bottom-left corner and place a Station.
 (Place it anywhere on land.)

Note: You can also skip this step and reuse an existing station.



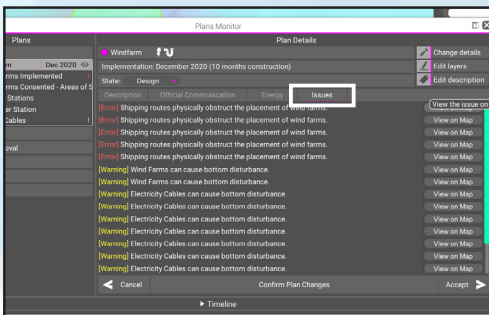
STEP 7: ADD THE ENERGY CABLES

- A: Select the Energy Cables layer.
- B: Select the type of MW cables you would like.
- C: Click Create.
- D: Click on the landing station and connect it to the center of your wind farm ⚡. Once connected, click accept.



STEP 8: DISTRIBUTE THE ENERGY

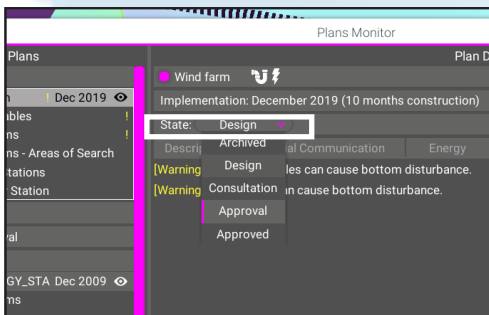
- A. In the Plans Monitor, have a look under the Energy tab.
- B. Look for your new grid, with a name preceded by ⚙️.
- C: Rename the grid by clicking on and editing the name.
- (Advanced) D: Click on ▼ and drag the Target slider to change how much energy a country receives from the farm.



STEP 9: SOLVE ANY ISSUES

Check the Issues tab in the Plans Monitor to see if there are any issues. An **[Error]** will prohibit you from implementing your plan. A **[Warning]** will not. So make sure you solve the errors.

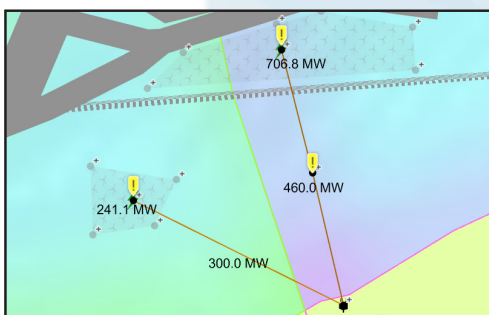
Note: Click on View on Map to see where an error occurs.



STEP 10: FINALISE THE PROCESS

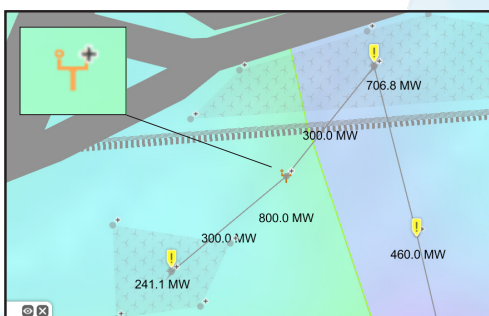
Once you think your plan is ready for implementation, make sure you've clicked Accept under Confirm Plan Changes. Finally, change the plan's state. In the end, only plans that are Approved will be implemented.

Note: Consultation will make your plan visible to others.



ADVANCED: CONNECT TO ANOTHER WIND FARM

It is also possible to connect multiple wind farms to a single Landing Station using existing cables. You might want to use a Converter Station for this (see below). This way your energy infrastructure can be optimised.



ADVANCED: ADD A CONVERTER STATION

In order to optimise the infrastructure even more, Converter Stations are used to connect and disperse the energy and can be added in the same way as a Landing Station (Step 6).

Note: Converter Stations can be placed in the sea as well.